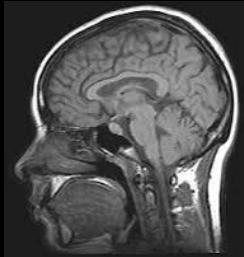


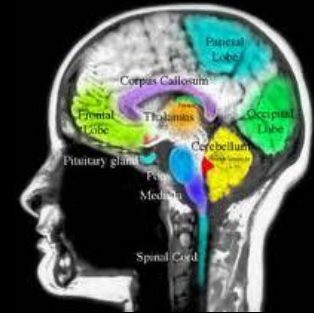
***You may be
eligible
if you:***

Department of Psychiatry

Beng-Choon Ho, MD
UIHC, W278GH
Iowa City, IA 52242



**For More Information
Please Contact:**



- > Are 13-16 years old and have no family history of schizophrenia or related disorder

OR

- > Are 13-16 years old and have a first degree relative (full-sibling or biological parent) diagnosed with schizophrenia, schizoaffective or schizophreniform disorder

Amy Blackmer

teen-study@uiowa.edu



Scan me from your smart phone or:

**Office
319-353-8514**


**Toll Free
1-866-890-5972**

This is not a College Community School District publication. It is being distributed through the school district as a community service of the district to inform you of other community activities or services available.

**University of Iowa Researchers
Invite Participants
for a Research Study**

**Brain Connectivity in
Adolescents**

**Principal Investigator:
Beng-Choon Ho, MD**



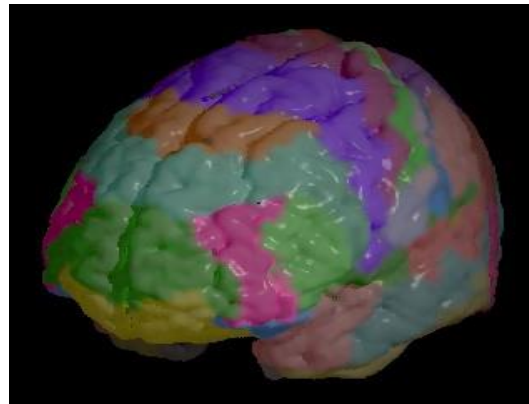
What will happen during this study?

- This study requires 3 visits and 4 follow-up phone calls over a 3-year period.
- During the first visit:
 - ~We will review the consent form with you and your parent or legal guardian and answer any questions you may have.
 - ~If you agree to participate, we will ask you questions about your mental, physical, and substance use history.
 - ~You will undergo a urine drug screen test and complete a word task to be sure you are eligible to participate. If so, you will complete various neuropsychological tests and personality questionnaires.
 - ~You will undergo a blood draw and an MRI brain scan.
 - ~Your parent or legal guardian will also be asked to complete questionnaires.
- The 2nd visit will include all of the above except the MRI brain scan.
- The 3rd visit will include all of the above.
- The follow-up phone calls will consist of answering questions about your mental, physical, and recent substance use.



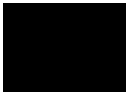
What is the purpose of this study?

To understand how the connections between different brain regions grow and develop in adolescents and factors that affect those connections.



Participants must be:

- ✓ Willing to undergo confidential urine drug screen tests for recreational drugs
- ✓ Willing to undergo MRI brain scans
- ✓ Willing to undergo blood draws



This study will take place at

**University of Iowa
Hospitals and Clinics**

Compensation will be provided.

Participation is Voluntary.